



From the Presidents Desk...

Welcome to Spring!

I hope by now all of you have thawed out from the seemingly never ending winter; this is the first time I can remember when we've had terrible weather for both the January and February meetings. We want to thank PJ Lacette once again for inviting the Club to come out for a meeting and Fun Day last month at the Best Paw Training Center; hopefully, next time we head out there the weather will be sunny and warmer than 40 degrees!

The weather for the Golden Retriever Rescue Reunion was no better – cold temperatures and rain ruled the day. The turnout of adopted goldens and their families was much smaller than in previous years, so there was less demand for our grooming services. Nevertheless, the MFGRC members who were there stayed busy into the middle of the afternoon, after taking a break to enjoy the terrific raffle. Combined with our matching donation, we raised \$300 for GRRMF. My sincere thanks to Kim and Linda Hitchcock, Theresa Bradley, Julie Kielts, Julie Wand, Ted and Cindy Crowell, Julie Crowell and fiancé James for enduring the rainy, cold weather and helping to make these goldens look spiffy!

Weather wise, we finally turned the corner, and had a beautiful day for the Match on March 6th. Congratulations to all who did well that day; there is a detailed report listing the winners in this issue of *Golden Tales*.

The Board of Directors is interested in hosting another Certificate of Conformation Assessment (CCA) this year, but because of the expense involved in bringing in three evaluators, we want to make sure there is sufficient interest among the membership before we make any definitive plans. We have included a basic explanation of what a CCA is all about in this edition of the newsletter, and we also sent out a mass e-mail to the membership with this information. If this program is something that interests you, please send a brief e-mail to Camille Doehring (mischiefgolden@juno.com) to let her know how many dogs you might enter. We need to have at least 20 entries to make the CCA feasible.



Hunt Test Chair Susan Fulenwider has advised us that our Hunt Test last month had the largest number of entries of any test in the Southeast this season. MFGRC's Hunt Test is so popular and successful for many reasons: the beautiful location on Wayne Gey's Golden Oaks ranch, Bob Young's delicious breakfasts, Susan's skill at organizing a top notch test, and the hard work of many, many MFGRC members. Susan has already thanked those who worked on last month's test, but I want to say a sincere thank you again to those of you who helped out, and who entered the test. We couldn't do it without our members – **THANK YOU!!!**

Next up in April: the ever popular Fun Day in Astatula at the Stanley Pond Tree Farm, on Saturday, April 10th. We'll start gathering mid morning to let our goldens play in the water. Around noon or so we'll take a break for a potluck lunch, and a short general meeting. Bring water and lots of towels for your dog, a dish to share, and a folding chair. Directions to the tree farm are on the website, and also in this issue of the newsletter. Hope to see you in Astatula!

Debbie Finch
2010 MFGRC President



**GOLDEN TALES IS A PUBLICATION OF THE
MID-FL GOLDEN RETRIEVER CLUB**

OBJECTIVES OF THE MID-FLORIDA GOLDEN RETRIEVER CLUB

To encourage and promote the purebred Golden Retriever; and to do all possible to bring their natural qualities to perfection. To urge members and breeders to accept the standard of the breed as approved by the American Kennel Club as the only Standard of Excellence by which Golden Retrievers shall be judged; and to do all in its power to protect and advance the interests of the breed by encouraging sportsmanlike competition at dog shows, obedience trials and field events.

Established 1984

Find us online at:

WWW.MFGRC.ORG

MFGRC OFFICERS FOR 2010

PRESIDENT	DEBBIE FINCH	gaga4goldens@cfl.rr.com	407.957.1530
VICE-PRESIDENT	SHIRL PHILLIPS	jpandsp@bellsouth.net	407.282.5549
SECRETARY	JUDI VOLPE	dolphreek58@yahoo.com	407.599-4486
TREASURER	TOM HELL	tohell50@hotmail.com	863.859.4610

MFGRC BOARD MEMBERS FOR 2010

JOANNE HELL	tohell@email.msn.com	863.859.4610
CAMILLE DOEHRING	mischiefgolden@juno.com	407.859.4571
ANN ROWE	Magikgldn1@aol.com	352.735.3565
BETTY LAMBERT	kailuagolden@kua.net	407.957.1530
SUSAN FULENWIDER	happygolucky@mpinet.net	386.775.8985
JOHN BLAIR	Jazziesgold@bellsouth.net	321-773-3476
ROSA BLAIR	Jazziesgold@bellsouth.net	321-773-3476

COMMITTEES FOR 2010

AKC Public Education Coord.	Britta Coy	puppy5234@aol.com	
GRCA. Delegate	Ellen Bartkus	bartkuse@bellsouth.net	772.567.6651
GRCA Columnist	Margie Sarkin	goldruls@att.net	
Membership	Shirl Phillips	jpandsp@bellsouth.net	407.282.5549
Newsletter	Leah Wright	lwright129@cfl.rr.com	407.782.4350
Puppy Referral	Deb Farris	faragold@yahoo.com	727-544-9376
Rescue Liaison	Robin Scott	fourdogsr@juno.com	407.592.0752
WC/WCX	Ann Rowe	Magikgldn1@aol.com	352.735.3565

GOLDEN TALES

Leah N. Wright, Editor
lwright129@cfl.rr.com
407.782.4350

Golden Tales is the official publication of the Mid-Florida Golden Retriever Club. It is published monthly online and distributed to all MFGRC members and newsletter subscribers.

SUBSCRIPTION RATES:

Included with paid MFGRC membership. Available online or via regular mail (must notify editor if you wish to receive via US Mail)

MFGRC MEMBERSHIP

Membership information is available from Debbie Finch at 407.957.1530 or gaga4goldens@netzero.com

Individual: \$25

Family: \$25

Associate (non-voting): \$25

Membership rosters are available to MFGRC members but are not intended for business, non-profit or personal solicitation of any manner whatsoever.

CLUB CORRESPONDENCE should be sent to the Secretary, Judi Volpe, at dolphreek@aol.com.

ADVERTISING RATES

Full page (with photo): \$25 *

1/2 page (with photo): \$15 *

Commercial full page: \$50

Commercial 1/2 page: \$30

Business card: \$50/year (12 issues)

*Ads for litters must be accompanied by copies of all health clearances to the editor.

NOTE:

For all advertisements placed in Golden Tales, advertisers **MUST** send payment in with your ad to the Newsletter Editor at the time of submission. If submission of the advertisement is done via email the ad cannot be placed in Golden Tales without payment.

Please send payment to Leah Wright, 459 Weathersfield Avenue, Altamonte Springs, FL 32714. Make all checks payable to MFGRC.

It is the Advertisers responsibility to confirm with the Newsletter Editor that she has received your advertisement and your payment.

LITTER ANNOUNCEMENTS

Offered as a service in conjunction with MFGRC's puppy referral. Health clearances and \$25 must be submitted to a puppy referral coordinator (see previous page) prior to publication of the announcements.

BRAGS, IN MEMORIAM, EVENT LISTINGS

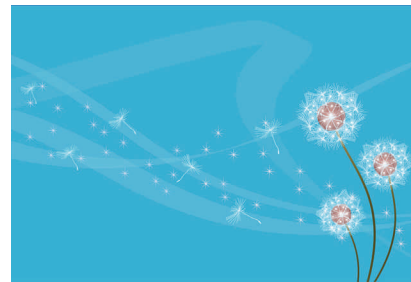
Items of this nature will be printed with NO CHARGE and must be submitted to the Editor. The editor reserves the right to make changes for content OR length.

No text, photos or drawings may be reproduced without permission from the editor.

Copyright 2010 MFGRC

From the Editor . . .

March is certainly living up to it's image so far, isn't it? It has roared in like a lion and my yard has the oak leaves to prove it.



After spending a few days in very chilly Atlanta at the end of February, my husband and I were very excited to see the temperature gauge in our vehicle inch upward as we traveled home. Levi enjoyed his long hikes in the cold weather but the rest of us were very happy to come home to the relative warmth of Florida.

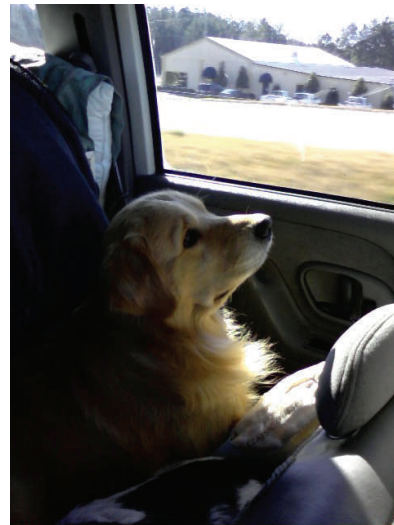
We have an exciting day lined up in Astatula in April, with our Fun Day and general meeting. Let's hope for a nice warm day with no rain and no wind. It will be good to see everyone and the dogs will love it.

We are re-running the "purple solution" recipe for those who missed it the last time. Apparently the stuff came in quite handy during the grooming day at the GRRMF reunion.

We have also included some information submitted by Jerrie Morrison regarding Comfortis and possible side effects for puppies. We have only included some of the information. Thanks Jerrie for submitting this! If you wish to read the study in its entirety, go to: <http://www.fda.gov/downloads/AnimalVeterinary/Products/ApprovedAnimalDrugProducts/FOIADrugSummaries/ucm062334.pdf>

Talk to you in April . . .

Leah Wright
Newsletter Editor



FEBRUARY BOARD MEETING MINUTES

The MFGRC Board Meeting was called to order by President Debbie Finch at 7:20 P.M. on February 10, 2010 at Rossi's.

Board Members Present: Debbie Finch, Judi Volpe, Tom Hell, Joanne Hell, Shirl Phillips, Susan Fulenwider and Betty Lambert.

Vice President's Report: One application was read and vote was unanimous: James and Susan Bryan

Secretary's Report: No report. Betty Lambert moved that the minutes from the last meeting be waved. Susan Fulenwider seconded. Vote was unanimous

Treasurer's Report: In the interest of the Club, we do not publish income information on the Internet. Tom Hell announced that membership dues are now delinquent. There will be reminders published about this in the newsletter.

Committee Reports:

Fun Match: Will be held on March 6th. Judges have been confirmed.
 Matthew Twitty – Obedience
 Deena Straus - Rally
 Claire Koshar - Conformation

MFGRC Specialty: Debbie Finch and Leah Wright continue to work on the Trophies. Betty Whaley is working on Hospitality.

2010 Agility Trial: John Blair has ordered the new weave poles and we have received a request to rent our agility equipment for DACOF. There was a discussion about pros and cons. Joanne Hell moved that we do not do this because of the potential cost to the club if the equipment is damaged.

DACOF: If you are interested in participating, contact Chris Daher.

DOCOF: Robin has been setting up teams and getting this in order.

WC/WCX: Deb Farris will be committee chair. No date or location is set.

Old Business:

Hunt Test: Susan Fulenwider reported that the hunt test went very well. We could have used more help like always but everything went very well.

New Business:

Meeting Change: The May meeting will be at the tracking test on May 2nd.

A motion to adjourn was made by Shirl Phillips. It was second by Joanne Hell. The meeting was adjourned at 9:20 P.M.

The next Board Meeting will be held on Monday, March 1, 2010 at Camille Doerhring's home at 7:00 P.M.

FEBRUARY GENERAL MEETING MINUTES

The MFGRC Board Meeting was called to order by President Debbie Finch at 1:00 P.M. on February 13, 2010 at the home of P.J. and Larry Lacette.

Members Present: Debbie Finch, Judi Volpe, Betty Lambert, Karen Angel and Carl Migden, Ted and Cindy Crowell, P.J. Lacette, Dave and Leslie Plank and Marilyn Richards. Visitor: Keith Shelly and Dr. Difonso

President Debbie Finch started by thanking P.J. and Larry for opening up their home and property for the fun day and meeting (even though it was cold and wet)

Vice President's Report: Shirl Phillips was unable to attend so there was no report.

Secretary's Report: No report

Treasurer's Report: Tom Hell was unable to attend so there was no report. DUES ARE PAST DUE!!! Please send your dues in if you have not done so.

Heart and Eye Clinic: This will be held at the Lakeland Shows on February 20th and 21st.

Fun Match: Will be held on March 6th. Judges have been confirmed.

Matthew Twitty – Obedience

Deena Straus – Rally

Claire Koshar - Conformation

Tracking Test: This event will be held at TGLee property, north of the airport. The May General Meeting will be held at this event on May 2nd.

MFGRC Specialty: This will be held on June 24th at the Orlando Fair Grounds.

Old Business:

Hunt test: Debbie Finch reported that the hunt test went very well and that Tom Hell, our treasurer expects a profit but did not have all expenses in as of yet.

2010 Agility Trial: John Blair has ordered the new weave poles and we received a request to rent our agility equipment for DACOF. There was a discussion about pros and cons. Joanne Hell moved that we do not do this because of the potential cost to the club if our equipment is damaged.

New Business:**No new business****Remember:**

February 27th is the Golden Rescue Reunion in Lakeland.

April 10th will be a General Meeting and fun day at Astatula

A motion to adjourn was made by Karen Angel. It was seconded by Leslie Plank. The meeting was adjourned at 1:20 P.M.

The next General Meeting will be held on Saturday, March 6, 2010 at the Fun Match at 23840 Oak Valley Lane, Sorrento

MFGRC 2010 Calendar of Events



<u>Date</u>	<u>Event</u>	<u>Location</u>	<u>Other Info</u>
April 10, 2010	Fun Day + general meeting	Stanley Pond Tree Farm Astatula	Debbie Finch Gaga4goldens@cfl.rr.com
May 2, 2010	TD Tracking Test + General Meeting	TG Lee property Southeast Orlando	Joyce Swegle, Secretary softwindgr@aol.com
June 24, 2010 (Thursday)	MFGRC Specialty	Central Florida Fairgrounds, Orlando	Betty Whaley, Chairperson autumngoldens@bellsouth.net
June 26, 2010 (Saturday)	General Meeting	Central Florida Fairgrounds, Orlando	After goldens show
June 26-27, 2010	Dog Agility Clubs of Florida (DACOF) competition	Osceola Heritage Park Hwy. 192 Kissimmee, FL	Chris Daher goldroyal@aol.com Directions: www.ohpark.com
Sept. 5, 2010 (Labor Day Weekend)	Dog Obedience Clubs of Florida competition (DOCOF) + Gen'l. Mtg.	Central Florida Fairgrounds, Orlando	Robin Scott, Team Captain Fourdogsr@embarqmail.com
Sept. 11-12, 2010	Fall Hunt Test	Golden Oaks Ranch Montverde, FL	Susan Fulenwider, Chair happygolucky@mpinet.net
Sept. 25 – Oct. 3	National Specialty	Denver, Colorado	www.grca.org
Oct. 30-31, 2010	MFGRC Agility Trial & gen- eral meeting on Oct. 30th	Turkey Lake Park, Southwest Orlando	John Blair, Chairperson jazziesgold@bellsouth.net
November 20, 2010	General Meeting	Ocala, Florida	After goldens show
Nov. or Dec. 2010	WC/WCX Test	TBD	Deborah Farris, Chair faragold@yahoo.com
December 18, 2010	Christmas Party / Mtg.	TBD	

The Whelping Box



Offered as a service in conjunction with MFGRC's puppy referral. Health clearances and \$25 must be submitted to the puppy referral coordinator.

DEB FARRIS

faragold@yahoo.com

727-544-9376

Jerrie Morrison (Sarasota) 941-650-4214

jmorrison222@comcast.net

Omni Just A Golden Tatonka x Omni's Jet Set

Born 8/8/09 4m/2f

Laura Topping (Manatee County) 727-408-0450

Toppdogger@yahoo.com

www.LoraleiGoldens.com

Loralei's Big Kahuna, WC x Loralei's Crocodile Kid, CGC

Born 12/22/2009 5m/2f

Karen Brady (Brandon) 813-661-8937

Karagold@aol.com

CH KaraGold's Keep Believin' UDX, RN, SH, AX, AXJ, WCX, VCX ex Georgianbay KaraGold's Seabreeze

Born 11/21/09 2m

Cyntha Resare Misty Ridge (Inverness) 352-344-3123

resarecyn@aol.com

AM - INT CH Fallchase First Call X Moonstruck Kelly of Misty Ridge

Born 1/28/10 6m/2f

Maura Roxby Davie (Fort Lauderdale) 954-802-7237

JROX@aol.com

Ch Gemini Fallchase The Butler Did It, BISS, CGC ex GoldRox Surf's Up

Born 3/4/2010 3m/6f

FEBRUARY FUN DAY BEST PAW FORWARD

FEBRUARY 13, 2010

Editor's Note: Okay, so the weather was foul (again) and it was cold. We don't have many pictures of dogs, but we do have some adorable baby pictures to share as well as photos of the Best Paw Forward training yards and other facilities, courtesy of Deb Finch. Thanks to PJ Lacette for sharing their property with us for a fun day.



2010 MFGRC Match Report

Nice weather (finally!), with sunshine and comfortable temperatures. A terrific turnout. A beautiful setting, and lots of beautiful golden retrievers. This was the story of MFGRC's annual Match on March 6th. The day started out with cool temperatures, but by the time the Obedience and Rally rings got underway, it had warmed up nicely. Judges Deena Strauss in Rally, and Matt Twitty in Obedience, got things started, and Conformation Judge Claire Koshar started a bit later with Junior Showmanship. There were so many people in attendance that we had to use overflow parking; there were so many obedience entries that it was the first event to get started, and the last to finish!

Winners included:

Robin Scott and Hannah (Knight Drmz Memories of Moonlight) had High in Match for the Regular Obedience classes;

Chris Daher and Rosie (Calusa's Strike up the Band) had the overall High Golden in Match this year (for the second year in a row – way to go Chris!);

Best Junior Puppy: Trace (Mischief Toasty's First Impression), owned by Camille Doehring;
Best Junior Dog: Gabby (Wonderland's Muttering Fool), owned by Diane and Vern Gank;

Best Senior Puppy and Best Puppy in Match: "TG" (Hillock's Tortuga Gold), owned by Janet Narushka and Janice Fitzgerald;

Best Adult and Best in Match: Southern Magik's Sunny Blue Skye, owned by Ann Rowe.

The 2010 Match would not have been such a success without the help and contributions of many MFGRC members. Sincere thanks go out to Tania Ladic for taking on the big job of Secretary for the Match; Robin Scott for stewarding and keeping an eye on the Obedience ring all day, Deena Strauss for judging Rally and then helping at the Obedience ring, new members Ted, Cindy, and Julie Crowell who were there to set up and tear down the rings, Susan Wilks for being an all around assistant during Friday's set up and during the Match, Georgia Jacobson and Dave and Leslie Plank for helping with lunch, Robin Senderowitz for taking care of the gifts for our judges, and Shannon Wilks for helping with the Raffle. And last, but certainly not least, a huge thank you to Ann Rowe for hosting the Match.

Submitted by Debbie Finch

Certificate of Conformation Assessment (CCA)

(Source: www.GRCA.org)

What is a CCA?

A CCA evaluation is a non-competitive area of participation in conformation where golden retrievers are evaluated against the Breed Standard. The owners are given a written assessment of their dog, which provides information not available in the show ring. The CCA tests each individual dog in ten categories on physical conformation and temperament. Three evaluators are used, of which two must be licensed AKC judges and golden retriever breeders, and are chosen because of their experience and background.

The CCA is open to all registered or ILP goldens over 18 months of age, including those dogs which have been spayed or neutered.

In addition, passing the CCA provides one conformation point, which can be used toward the GRCA Versatility titles (VC, VCX).

What are the qualifications for evaluators?

Category I evaluators must be approved AKC or CKC judges in good standing, are Golden breeders and/or have had at least two years of experience in judging Golden Retrievers.

Category II evaluators must be a breeder and owner of Golden Retrievers with ten years experience in Golden Retrievers; has bred at least three Golden Retriever litters; and has owned at least five different Golden Retrievers with any of the following titles: (a) AKC champion; (b) AKC UD or TDX; (c) AKC MH, SH; (d) AKC AX or AXJ.

All evaluators must have an understanding of retrievers and sporting dogs, including the purpose and function of the Golden Retriever. Evaluators must also be familiar with the process of evaluating dogs against the breed standard, rather than simply comparing dogs to each other. Evaluators must also be willing to give a written opinion on each dog.

For more information, see the attached "Frequently Asked Questions". Additional details on the CCA are also available on the GRCA website at www.GRCA.org.

Certificate of Conformation Assessment (CCA) FAQ's

1) What is the original intent of the CCA?

Twofold: (a) to provide a NON-COMPETITIVE area of participation in conformation where dogs are assessed against the Breed Standard rather than merely against other dogs present and (b) to give owners written reports as to the evaluators' assessments which will provide information not available in the show ring.

2) How does the CCA compare to other basic non-competitive, entry level tests offered to Golden Retrievers?

Both the Hunt Test and WC programs require an average passing score of 7 points in all categories and the number of attempts is not limited.

The CCA program is also on a point scale requiring the dog to score a minimum of 75 or higher out of 100 possible points, broken down into ten categories. A non-competitive CCA event tests the individual dog on the physical conformation and temperament qualities as set forth in the Breed Standard. There is a limit on the number of attempts that can be made. It also has a mandatory pass for temperament and sets a minimum age of 18 months. While the conformation quality of a retriever MAY improve with maturity and conditioning, the basic structure changes very little.

The CCA, WC, and Hunting Test programs are similar in that they all reward very good to excellent representatives of the breed by comparison to an impartial criteria without bias or dog-to-dog competition, and they all test the desired physical and/or mental attributes of a sound hunting companion.

3) Why have a seemingly high percentage of dogs passed so far?

In most cases people are not likely to enter their dogs if they don't have a reasonable expectation of qualifying, so poorer dogs will not often be entered. If the quality of the dogs entered is high enough it is conceivable that all could pass. The success of the program cannot be based on how many pass or fail.

4) Is there any difference between a CCA from three Category 1 evaluators versus a dog that obtains the title from a panel that was not all from Category 1?

No. All evaluators are chosen because of their experience and background and a willingness to give a written opinion and scores. At least two of the qualifying scores must come from Category 1 evaluators in order to obtain the title.

5) Why wouldn't GRCA require all CCA evaluators to have bred, exhibited and had success with Golden Retrievers only?

There are certainly knowledgeable and capable people judging Golden Retrievers for the AKC whose primary breed is not ours, and many who come from other Groups as well. They add their wider experience to the pool of evaluators, and there is a place for varying emphasis within the program, just as there is in the show ring. There are also performance people who have a strong dual knowledge of what is required to produce physically good retrievers.

6) How many evaluators are there?

Approximately 4 dozen presently. We initially invited all breeder-judges of Goldens to apply and more than half of them did. Some people applied through the form posted on the website. A number of versatile breeder-exhibitors are being contacted to expand the Category 2 listing...not all experienced people necessarily want to become AKC judges. In order to make the program viable for hosting clubs a broad geographical listing is desirable.

7) How does the CCA Title add point value to the VC/VCX Program?

Listed below are reasons the CCA adds value and how it could compare to other titles:

Limited tries, a dog can't campaign indefinitely for this title.

Qualified Evaluators with breed experience.

In-depth evaluation of the Goldens conformation not biased towards styles or trends and focused on breed purpose.

Open to all registered or ILP Goldens over 18 months of age including those which have been spayed or neutered.

No limit to how many dogs can earn this title in a calendar year. Which means if our breeders are breeding more dogs to the standard there is no penalty because of sheer numbers.

Other entry level titles have unlimited tries and can be trained with limited experience and inherited basic instinct.

Many titles that are awarded a high point value in the Versatility titles have no relation to the standard. They require a trained and talented Golden.

Many Goldens with good to excellent conformation will not be campaigned in the show circuit due to time, money or interest.

If we only scored the field titles based on competitive dog comparisons then none of the WC programs or Hunt Test Programs could count towards a Versatility title because there is no comparative judgment in those events.

Although this is not an official temperament test it is a component of the CCA title.

Experienced breeders and competitors who are not approved AKC judges may qualify and make a difference by becoming CCA Evaluators.

We have put faith in our evaluators, that they award very-good to excellent representatives of the AKC Golden Retriever Standard with a CCA title.

8) Why does the CCA limit attempts to only six evaluations and why can you see such a difference in scores between some of these evaluations?

The primary objective of the CCA Program is to be very rewarding as an educational experience. The goal of the program is to have everyone walk away with respect, admiration for their Golden and a good understanding of the breed standard. Secondly, we put faith in our qualified Evaluators to be objective, educational and reward (with qualifying scores and honorable mentions) good to excellent representatives of the breed in relation to the standard regardless of styles or trends etc. The scores will always differ to varying degrees since the standard leaves room to be subjective. However, the key to managing these differences is to award a dog that is ABLE to obtain three qualifying scores or honorable mentions from the 3 different Evaluators in a limited amount of tries regardless of individual preference or style. The limit was never meant to weaken chances at a title; it was put in place as part of the requirement to earn a CCA Certificate. The requirement being, the dog must receive a qualifying score or honorable mention at a MINIMUM of 50% of its evaluations without the owner/entrant being able to select the Evaluators individually.

9) Can you enter under the same Evaluator twice?

As a participant you will always have the right to choose the CCA Events you wish to enter but the dog must be entered under all the Evaluators on the premium list. A dog may be entered under the same Evaluator twice but only one qualifying score may count towards a CCA certificate. Entering under the same Evaluator could lessen your chances of earning the CCA title if you already have a qualifying score from that individual. However, if a previous score wasn't qualifying there is always a possibility the dog may receive a better score the second time under the same Evaluator. Dogs can look different on a different day.

10) What do I bring to a second event if my dog has qualifying scores from a previous event?

It is a good idea to bring the paperwork showing previous qualifying scores with you. Make sure the CCA Event Secretary is aware of your prior passes when you arrive at the second event or send a note along with your entry form. Also, we would hope and expect people to honor an entrant's word and everything is verified with the CCA Committee before the actual certificates are mailed out.

11) May the host club limit how many dogs an individual owner can enter?

The CCA Committee does not place any restrictions on host clubs regarding limits except that only 1 entry per dog may be accepted. An example of a host club limitation might be: "No owner may have a second dog chosen unless the first dog of all applicants have been accepted." The host club may also choose NO limits or to limit owners to two or three or four dogs in an effort to be fair to all applicants. It is our hope that many future events will meet demand and host clubs will not have to favor limits.

You can find out more about the CCA Program at this web site:

<http://www.grca.org/events/cca/index.html>



MFGRC hosted another very successful Eye & Heart Clinic. We serviced 49 dogs at the eye clinic and 49 dogs at the heart clinic. This is the best turnout we've had for this clinic in several years.

I want to extend a special thanks to Tom Hell for arranging the wonderful space for the clinics and to Judi Volpe for being there with me throughout. Also thanks to Debbie Caudill, Cindi Metcalf and Karin Ippel for the help throughout the weekend. We couldn't have done it without you.

Camille N. Doehring



DOCOF

Hi Members - -The year is rolling past at a very fast speed. It will be summertime before you know it.

DOCOF - Dog Obedience Clubs of Florida's annual competition is Labor Day weekend. Our teams, and I do mean plural -- are filling fast. We have one or two openings and as soon as those are filled - we can start a third team -- for the first time in the history of MFGRC competing.

If you are interested in being on the Team -- and have not already notified me -- please send me an e-mail at fourdogsr@embarqmail.com as soon as possible and let me know what level you and your dog are working at. Please don't think you have to be asked individually - this is your invitation to let me know you want on the team.

Submitted by: Robin Scott



JUST FOR JUNIORS

Chatham and Lucinda Napoli

TEAM NAPOLI

(Chatham & Lucinda)

THE 134TH WESTMINSTER KENNEL CLUB DOG SHOW

We were there!

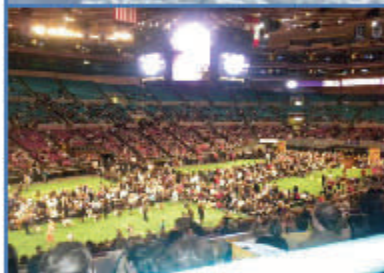
*What an amazing
experience -*

*The dog show was
incredible of course,
we experienced
showing at Madison
Square Garden and
hopefully next year
we won't be as
nervous!*

*We had two days to
tour and enjoy the
wonders of New York
City ☺*

*One of the highlights
of the trip was the
SNOW!!!! We had
never seen it before!
Central Park covered
in snow was just
incredible!*

*Looking forward to
next year....*



Come and Join Us for **SOME FUN!!!!**

Fun Field Day and MFGRC General Meeting Bob Dennis' Stanley Pond Tree Farm in Astatula FL

When: Saturday, April 10, 2010, 9:00 a.m.
Where: Stanley Pond Tree Farm, Astatula, FL
Events: Doggie Swim and Play, Field Events and
 MFGRC General Meeting



There will be a POT LUCK lunch so bring your favorite dish to share. Bring a chair, your dog'(s) favorite water toy(s), water for your dog(s) and sun screen.

***P.S. Don't forget to bring your raffle donations for the
 SPECIALTY RAFFLE!!!***

DIRECTIONS:

FROM ORLANDO: Take I-4 to HWY 408 West. Exit 408 at John Young. Take John Young North to HWY 441. Turn Left on HWY 441. Take HWY 441 North to Zellwood. Turn Left at the Traffic light signal on Jones Ave. Jones Ave is at the North end of Zellwood at the bottom of a hill. Go Approx. 3.2 miles on Jones Ave until it becomes Duda Road. Take Duda Road for less than 1 mile- it dead ends into CR 448A. Turn Left on CR 448A for approx. 1/2 mile & turn Right on CR 48 for Approx 2 Miles- Stanley Pond Tree Pond will be on your left & you will see 2 big ponds.

FROM THE WEST COAST: Take I-4 East to US 27- Haines City Clermont Exit. Take US 27 North towards Clermont for approx. 28 miles to CR 561. Turn Right on CR 561 & go approx. 7 miles to CR 48. Turn Right on CR 48 for approx 2 miles- Stanley Pond Tree Farm will be on your Right.

FROM THE EAST COAST: Take I-4 West to SR 436 Altamonte Springs. Go West on 436 approx 7 miles to HWY 441 in Apopka. Go North on HWY 441 to Jones Ave & follow Directions 'From Orlando.

WANTED: TRACKLAYERS



WHAT WE NEED: A few good members willing to be on the Tracking committee and to lay tracks on May 1 and 2, 2010.

WHAT YOU WILL NEED TO DO:

- ❀ ❀ ❀ ❀ ❀ Show up for most of the Saturday of May 1, 2010, and the morning of Sunday, May 2, 2010.
- ❀ ❀ ❀ ❀ ❀ Be prepared to plot and lay a track on Saturday with the judges, and then again on Sunday all by yourself.

WHAT YOU WILL RECEIVE:

- ❀ ❀ ❀ ❀ ❀ An astounding amount of knowledge while walking with the judges, on how tracks are planned, and laid;
- ❀ ❀ ❀ ❀ ❀ A wonderful feeling of having helped, and hopefully, laying, one of the tracks on which a team earns their TD;
- ❀ ❀ ❀ ❀ ❀ The club provides small snacks for breakfast each day, and also lunch each day.

You will be both helping out the club - and also learning about Tracking!
This will count for volunteering at a club function for the End of Year Awards.
You will be tired after the test on Sunday, but it will be a "good" tired.

IF you DON'T have a dog that will be ready in May - we can really use your help!

Please respond to Joyce Swegle:

softwindgr@aol.com



EVENT NO. 2010445903

Entries close 7:30 pm, April 22, 2010 at the Test Secretary's home,
after which time entries cannot be accepted, cancelled or substituted.

PREMIUM LIST

Mid Florida Golden Retriever Club

(Licensed by the American Kennel Club)

**Tracking Dog Test**

(Entry limited to 12 dogs plus alternates.)

DATE: Sunday, May 2, 2010**LOCATION:** Lee Vista Center, SR 436 & 528, Orlando, Florida

CERTIFICATION: Only entries that are accompanied by a tracking certification statement signed by a licensed AKC judge and dated within 12 months prior to the date of the test will be accepted.

ENTRY DRAWING : At 8pm, April 22, 2010, the Test Secretary will conduct a random draw of all entries at Publix Lk. Forest, Hwy 46, Sanford, Fl.

TEST HOURS: 6:00 AM until the last track is completed.

JUDGES

Mr. Ron Seeley (18975)
167 NE Jardain Rd.
Port St. Lucie, Fl. 34983

Mrs. Lucinda Seeley (90148)
167 NE Jardain Rd.
Port St. Lucie, Fl 34983

DRAW FOR TRACKS: The draw for running order of tracks will be held on, Sunday May 2, 2010 at 7:00 AM in the back parking lot of the Denny's Restaurant on State Road 436. The first track will be run following the draw. In the event an accepted entry is absent, the first attending alternate by the drawing will participate, and so on.

AMERICAN KENNEL CLUB CERTIFICATION

Permission has been granted by the American Kennel Club for holding this event under American Kennel Club rules and regulations.

James P. Crowley, Secretary

Mid Florida Golden Retriever Club**OFFICERS**

President	Debbie Finch
Vice President	Shir1 Phillips
Treasurer	Tom Hall
Secretary	Judi Volpe 5621 Moat Ct Orlando, Fl 32810

DIRECTORS

Susan Fulemwidar, Camille Doehring, Ann Rowe, Betty Lambert
John Blair, Rosa Blair, Joanna Bell

TRACKING TEST COMMITTEE

Susan Fulemwidar, Judi Volpe, Robin Scott, Jodie Faist
Chair and Secretary Joyce Swagle
1730 Cedar Stone Ct. Lk. Mary, Fl 32746-4615
407-333-2375 Cell 407-461-4076 softwindgr@aol.com

ENTRY LIMIT: 12 dogs plus alternates.

ENTRY FEE: \$60.00 per entry

(Includes recording fee in accordance with AKC rules, Chapter 11,
Section 2 of Dog Show Rules)

Make checks payable to: **MFGRC**

(No cash please and no credit cards. No faxed or e-mailed entries can
be accepted.) Exhibitors will be notified via email when entry is
received.

ENTRIES:

Entries must be on official AKC entry forms or photocopy of same
including the reverse side with agreements and rules. Entry form must
be signed. **THIS IS OPEN TO ALL BREEDS.**

MAIL ENTRIES TO:

Joyce Swagle 1730 Cedar Stone Ct, Lk. Mary, Fl 32746

When the limit of 12 dogs has been reached, all remaining entries will
comprise the alternate list. Alternates have the option to accept or
decline being placed on the alternate list. Those that decline will

have their entry fee returned. The Test Secretary will notify all
entrants of the results of the draw by email and or phone. In the
event an accepted entry is absent the day of the test, the first
attending alternate will participate, and so on.

ELIGIBILITY:

Only dogs that have passed a tracking certification under a licensed
AKC judge within 12 months prior to the date of the test are eligible
to be entered in a Tracking Dog test. A statement of certification
must accompany each entry.

BITCHES IN SEASON MAY PARTICIPATE:

Entrants must notify the Test Secretary and judges that their bitch is
in season prior to the drawing for tracks. Bitches in season will
participate only after all other dogs have been tested.

AWARDS:

Those handlers and dogs marked "Passed" by the judges will be issued a
certificate by the AKC and will be given the last article on their
track, a leather glove, signed by the judges and a copy of the map of
their track.

CONDITIONS AT THE TEST SITE:

Lee Vista is an office/industrial park.

****ATTENTION EXHIBITORS and SPECTATORS****

Due to the change in nature of the fields being used by clubs for
tracking tests and the increased population at these sites by the
general public, dogs shall be "on lead" at all times on any areas of
the tracking site. A dog that is allowed to run free and off lead, at
any time before the test, during the test, after failing or after the
completion of its' track, shall be failed and excused. If this occurs
before the test, the dog shall be excused and not allowed to run in the
test.

DIRECTIONS TO THE SITE:

The test site is just north of the intersection of SR 436 (Semoran Blvd.) and SR 528 (Beeline Expressway). Follow directions to Orlando International Airport. From SR 528 (Beeline Hwy.) /airport exit, take SR 436 (Semoran Blvd.) north approximately ¼ mile to the intersection of Lee Vista Blvd. Denny's Restaurant is on the northeast corner of the intersection of SR 436 at T.G. Lee Blvd.

FOR YOUR REFERENCE:

The club will have a first aid kit and cell phone at the test site. Additionally, the following medical facilities are near the test site:

HUMAN:

Florida Hospital/E.Orlando:407/275-3150, 7727 Lake Underhill Rd.

CANINE:

Veterinary Emergency Clinic (South Orlando office):407/438-4449, 9500 Satellite Blvd. (near Sams in Cypress Park off Taft Vineland Rd.).

In case of emergency, dial 911.

Hotels that will accept dogs

LaQuinta Orlando North
7160 N Frontage Rd Orlando, FL
407-240-5000

LaQuinta Orlando Airport West
7931 Daetwyler Rd Orlando, FL
407-857-9215

OFFICIAL AMERICAN KENNEL CLUB ENTRY FORM



MID FLORIDA GOLDEN RETRIEVER CLUB
TRACKING DOG TEST, EVENT# 2010445903
Sunday, May 2, 2010

Held at Lee Vista Center, State Roads 436 & 528, Orlando, FL

Entries will close 7:30 PM Thursday, April 22, 2010 at the Secretary's address. The entry fee for each dog is \$60.00.

Make checks payable to the MFGRC. Mail checks and entries to the Test Secretary: Joyce Swegle
1730 Cedar Stone Ct, Lk. Mary, FL 32746 (407) 333-2375 softwindgr@aol.com

Notice: PLEASE PUT BREED & NAME OF TEST ON CHECKS. I ENCLOSE \$_____ for entry fees.

IMPORTANT - Read carefully instruction on before filling out. Numbers in the boxes indicate sections of the instructions relevant to the information needed in that box. PLEASE PRINT. FILL OUT FORM COMPLETELY.

BREED _____ VARIETY (1) _____ SEX _____

DOG SHOW CLASS _____ CLASS DIVISION _____
Tracking Dog Test

ADDITIONAL CLASSES _____ OBEDIENCE TRIAL CLASS _____ JR SHOWMANSHIP CLASS _____

FULL NAME OF DOG _____

ENTER NUMBER HERE: _____ DATE OF BIRTH: _____

AKO REG NO. _____ AKO LITTER NO., _____ JLP NO. _____ PLACE OF BIRTH _____
U.S.A. CANADA FOREIGN

FOREIGN REG. NO & COUNTRY _____

BREEDER _____

SIRE _____

DAM _____

ACTUAL OWNER(S) (2) Please print _____

OWNER'S ADDRESS _____

CITY STATE ZIP _____

HANDLER (if other than owner) _____

I CERTIFY that I am the actual owner of the dog, or that I am the duly authorized agent of the actual owner whose name I have entered above. In consideration of the acceptance of this entry, I/we agree to abide by the rules and regulations of the American Kennel Club in effect at the time of this event, and by any additional rules and regulations appearing in the program set for this event, further agree to be bound by the "Agreement" printed on the reverse side of this entry form. I (we) certify and represent that the dog entered is not a hazard to persons or other dogs. This entry is submitted for acceptance on the foregoing representation and agreement. I (we) agree to conduct myself (ourselves) in accordance with all such Rules and Regulations (including all provisions applying to discipline) and to abide by any decisions made in accord with them.

SIGNATURE OF OWNER OR AGENT DULY AUTHORIZED TO MAKE THIS ENTRY _____

(Must be signed here)

TELEPHONE _____

E-Mail address _____

AKC Rules, Regulations, Policies and Guidelines are available on the American Kennel Club Web site, www.akc.org

AGREEMENT

I (we) agree that the club holding this event has the right to refuse this entry for cause which the club shall deem sufficient. In consideration of the acceptance of this entry and of the holding of this event and of the opportunity to have the dog judged and to win prizes, ribbons, or trophies, I (we) agree to hold the AKC, the event-giving club, their members, directors, governors, officers, agents, superintendents or event secretary and the owner and/or lessor of the premises and any provider of services that are necessary to hold this event and any employees or volunteers of the aforementioned parties, and any AKC approved judge, judging at this event, harmless from any claim for loss or injury which may be alleged to have been caused directly or indirectly to any person or thing by the act of this dog while in or about the event premises or grounds or near any entrance thereto, and I (we) personally assume all responsibility and liability for any such claim; and I (we) further agree to hold the aforementioned parties harmless from any claim for loss, injury or damage to this dog.

Additionally, I (we) hereby assume the sole responsibility for and agree to indemnify, defend and save the aforementioned parties harmless from any and all loss and expense (including legal fees) by reason of the liability imposed by law upon any of the aforementioned parties for damage because of bodily injuries, including death at any time resulting therefrom, sustained by any person or persons, (including myself (ourselves)), or on account of damage to property, arising out of or in consequence of my (our) participation in this event, however such, injuries, death or property damage may be caused, and whether or not the same may have been caused or may be alleged to have been caused by the negligence of the aforementioned parties or any of their employees, agents, or any other persons. I (WE) AGREE THAT ANY CAUSE OF ACTION, CONTROVERSY OR CLAIM ARISING OUT OF OR RELATED TO THE ENTRY, EXHIBITION OR ATTENDANCE AT THE EVENT BETWEEN THE AKC AND MYSELF (OURSELVES) OR AS TO THE CONSTRUCTION, INTERPRETATION AND EFFECT OF THIS AGREEMENT SHALL BE SETTLED BY ARBITRATION PURSUANT TO THE APPLICABLE RULES OF THE AMERICAN ARBITRATION ASSOCIATION. HOWEVER, PRIOR TO ARBITRATION ALL APPLICABLE AKC BYLAWS, RULES, REGULATIONS AND PROCEDURES MUST FIRST BE FOLLOWED AS SET FORTH IN THE AKC CHARTER AND BYLAWS, RULES, REGULATIONS, PUBLISHED POLICIES AND GUIDELINES.

INSTRUCTIONS

1. (Variety) If you are entering a dog of a breed in which there are varieties for show purposes, please designate the particular variety you are entering (i.e., Cocker Spaniel (solid color black, ASCOB, parti-color), Beagles (not exceeding 13 in., over 13 in. but not exceeding 15 in.), Dachshunds (longhaired, smooth, wirehaired), Bull Terriers (colored, white), Manchester Terriers (standard, toy), Chihuahuas (smooth coat, long coat), English Toy Spaniels (King Charles and Ruby, Blenheim and Prince Charles), Poodles (toy, miniature, standard), Collies (rough, smooth).

2. The following categories of dogs may be entered and shown in Best of Breed competition: Dogs that are Champions of Record and dogs which, according to their owners' records, have completed the requirements for a championship, but whose championships are unconfirmed. The showing of unconfirmed Champions in Best of Breed competition is limited to a period of 90 days from the date of the show where the dog completed the requirements for a championship.

3. (Event Class) Consult the classification in this premium list. If the event class in which you are entering your dog is divided, then, in addition to designating the class, specify the particular division of the class in which you are entering your dog, i.e. age division, color division, weight division.

4. A dog must be entered in the name of the person who actually owned it at the time entries for a trial closed. If a registered dog has been acquired by a new owner, it must be entered in the name of its new owner in any trial for which entries closed after the date of acquisition, regardless of whether the new owner has received the registration certificate indicating that the dog is recorded in his/her name. State on entry form whether transfer application has been mailed to AKC. (For complete rules refer to Chapter 11, Section 3).

If this entry is for Junior Showmanship, please give the following information:

JUNIOR SHOWMANSHIP _____ JR.'S DATE OF BIRTH _____

AKC JUNIOR HANDLER NUMBER _____

The number above MUST be included. Should you not have your Junior Handler number, this may be obtained from the American Kennel Club. Phone (919) 816-3814.

By signing the entry form I (we) certify that the Junior Showman does not now, and will not at any time, act as an agent/handler for pay while continuing to compete in Junior Showmanship.

ADDRESS _____

CITY _____ STATE _____ ZIP _____

If Junior Handler is not the owner of the dog identified on the face of this form, what is the relationship of the Junior Handler to the Owner _____

Treasure Coast Retriever Club

The Treasure Coast Retriever Club is having its HRC Hunt Test April 10th and 11th 2010 in Okeechobee at the Dempsy Property. The Upland Hunt will include pheasants for the game Bird. The Premium is on Entry Express.

Visit their website at www.treasurecoastretrieverclub.com, click Events and scroll down to the HRC Test information.

Great Grounds and a Great Hunt!!! For those new to HRC — C'mon down!!!



KnightDrnz Franks For The Memories (Vali)

Owned and loved by Robin Scott

**Premium List
AKC Sanctioned A Match**

Florida Gulf Coast Golden Retriever Club, Inc.



Golden Retriever Specialty Sanctioned A Match

Sunday, May 30, 2010

**Dog Training Club of St. Petersburg (Indoors)
St. Petersburg, FL**

Match judging begins at 10:00 a.m. Match hours are from 10:00 a.m. to 12:00 p.m. EDT. Day-of-Match entries will be accepted starting at 8:30 a.m. and close at 9:30 a.m. EDT on Sunday, May 30, 2010, after which time entries cannot be accepted, cancelled, or substituted as provided in Chapter II, Section 6, of the Dog Show Rules. Pre-entries accepted as specified in this premium.

Major pointed dogs are eligible for competition. Champions of Record with the AKC may not be shown. Professional handlers may enter provided they own/co-own/bred/co-bred the exhibit.



Sanctioned by the American Kennel Club

*Wins at Sanctioned Matches carry no
American Kennel Club championship points.*

Directions to Show Site

From the East:

Take I-4 West to Exit 45A, merge onto I-275 South towards St. Petersburg
Take Exit 26 for 54th Ave North
Keep Right at the fork, follow signs for US-19/Kenneth City/Lealman and merge onto 54th Ave N
Turn Left at 34th St N
Show site will be on your right.

From the South:

Take I-75 North towards Tampa
Take Exit 228 and merge onto I-275 N towards St. Petersburg
Take Exit 17 on Left to merge onto 34th St. S/FL-55/US-19N towards FL-682 W/ Pinellas Bayway/St. Pete Beach
Make a U-Turn at 54th Ave N
Show Site will be on your Right.

From the North:

Take I-75 South towards Tampa
Take a slight right at I-275 South towards Tampa/St. Petersburg
Take Exit 26 (54th Ave N)
Keep Right at fork, follow signs for US-19/Kenneth City/Lealman and merge onto 54th Ave N
Turn Left at 34th Street
Show Site is on the Right.

(This page is blank)

Veterinarian

Emergency Veterinarian care can be found at:

Animal Emergency Clinic
3165 22nd Ave N
Saint Petersburg, FL 33713
727-323-1311

Directions:

Head south on 34th St N/FL-55 S/US-19 S toward 44th Ave N
Turn left at 22nd Ave N
Destination will be on the left

Please remember to pick up after your dogs and keep the exercise areas clean.

Pre-Entries close May 20, 2010. Mailed entries must be post-marked by May 15, 2010, after which no pre-entry may be accepted, substituted or cancelled as provided in Chapter II, Section 6, of the Dog Show Rules. **Mail Pre-Entries to Match Secretary: Theresa Bradley, 438 Carriage Road, Satellite Beach, FL 32937, trisavy@att.net**

Day-of-Match Entries: \$10 per entry
Day-of-Match entries will be taken at the Dog Training Club of St. Petersburg from 8:30 a.m. to 9:30 a.m. EDT, May 30, 2010 after which no entries can be accepted, substituted or cancelled.

Exhibitors should follow their veterinarian's recommendation to assure their dogs are free of internal parasites, any communicable diseases, and have appropriate vaccinations.

Conformation Classes

Golden Retrievers Only
All dogs must be at least 6 months old.

- Puppies 6-9 months
- Puppies 9-12 months
- Puppies 12-18 months
- American Bred
- Open

Classes divided by sex
Winners of all classes will be judged for Best in Match

Rosettes & Prizes

- Best of Match — Pink & Green Rosette & Golden Retriever Gift Basket (value \$75)
- Best Puppy in Match - Pink & Green Rosette and Dog Bed
- First Prize — Rose Rosette and British-Style Slip Lead
- Second Prize — Brown Rosette
- Third Prize — Light Green Rosette
- Fourth Prize — Gray Rosette



Sanctioned by the American Kennel Club
Wins at Sanctioned Matches carry no American Kennel Club championship points.

OFFICIAL ENTRY FORM

AMERICAN KENNEL CLUB

Florida Gulf Coast Golden Retriever Club
Sanctioned A Conformation Match, June 19, 2009

Entry of dog: \$8. Mail entries to Match Secretary: Theresa Bradley, 438 Carriage Road, Satellite Beach, FL 32937. Pre-entries close May 20, 2010. Mailed entries must be post-marked no later than Sat. May 15, after which no pre-entries will be accepted, cancelled or substituted. Checks to be made payable to FGCGRC. Day-of-Match Entries: \$10. Day-of-match entries accepted from 8:30 A.M. to 9:30 A.M., May 30, 2010

ENCLOSE 2 ... In all cases

IMPORTANT! Read Carefully, notations on Reverse Side Below Filing On. Markers in the boxes indicate sections of the form that should be filled in and returned to AKC FOR ENTRY.

BREED	VARIETY	SEX	
DOG'S COLOR	CLASS	CLASS	CLASS
CLASS	CLASS	CLASS	CLASS
ADDITIONAL CLASSES	OGSD BRED CLASS	PUPPY CLASS (Age Limit)	JR. SHOW/ADJ. P. CLASS
NAME OF (Sex Bred) OWNER/BREEDER (Last)			JR. HANDLER NUMBER
FULL NAME OF DOG			
<input type="checkbox"/> AKC TAG # (Info number line) <input type="checkbox"/> Dog # <input type="checkbox"/> <input type="checkbox"/> AKC LITER # (Info #) <input type="checkbox"/> <input type="checkbox"/> EP OR POLIC # <input type="checkbox"/> <input type="checkbox"/> FOREIGN BIRTH & COUNTRY # (Info number line) <input type="checkbox"/> Dog # per AKC rules entry			
BREEDER			
SHEP			
TAX#			
ACTUAL OWNER(S) <input type="checkbox"/> OWNER'S ADDRESS <input type="checkbox"/> CITY <input type="checkbox"/> STATE <input type="checkbox"/> ZIP <input type="checkbox"/>			
NAME OF OWNER'S AGENT (If any) at the show			

AKC Rubs, Regs, and Rules are available on the American Kennel Club Web site, www.akc.org

AGREEMENT

I/we agree that the club holding this event has the right to refuse the entry or cause when the club and I/we are... I/we hereby agree to hold the AKC, the sponsoring club, their members...

RESTRICTIONS

1. (Variety) If you are entering a dog or breed in which there are penalties for show purposes, please designate the particular variety you are entering... 2. The winning dog of any dog show...

3. (From Show) Come to the show early in the morning for the show times in which you are entering your dog is divided... 4. A dog may be entered in the name of the person who actually owned it at the time when it was shown...

5. (From Show) Come to the show early in the morning for the show times in which you are entering your dog is divided... 6. A dog may be entered in the name of the person who actually owned it at the time when it was shown...

7. (From Show) Come to the show early in the morning for the show times in which you are entering your dog is divided... 8. A dog may be entered in the name of the person who actually owned it at the time when it was shown...

9. (From Show) Come to the show early in the morning for the show times in which you are entering your dog is divided... 10. A dog may be entered in the name of the person who actually owned it at the time when it was shown...

11. (From Show) Come to the show early in the morning for the show times in which you are entering your dog is divided... 12. A dog may be entered in the name of the person who actually owned it at the time when it was shown...

13. (From Show) Come to the show early in the morning for the show times in which you are entering your dog is divided... 14. A dog may be entered in the name of the person who actually owned it at the time when it was shown...

15. (From Show) Come to the show early in the morning for the show times in which you are entering your dog is divided... 16. A dog may be entered in the name of the person who actually owned it at the time when it was shown...

17. (From Show) Come to the show early in the morning for the show times in which you are entering your dog is divided... 18. A dog may be entered in the name of the person who actually owned it at the time when it was shown...

19. (From Show) Come to the show early in the morning for the show times in which you are entering your dog is divided... 20. A dog may be entered in the name of the person who actually owned it at the time when it was shown...

Florida Gulf Coast Golden Retriever Club Officers

- President: Julie Kielts
642 Kelly Green Street, Palm Harbor, FL 34683
Vice-President: Jane Myers
12580 N US Hwy 301, Thonotosassa, FL 33592
Treasurer: Michelle Whitney
10501 131st Street, Largo, FL 33774
Secretary: Emily Rowe
5800 27th Street S, St. Petersburg, FL 33712
Board Members: Greg Myers
Deborah Young
Beth Bremmer

Match Committee

- Match Chair: Michele Whitney
10501 131st Street, Largo, FL 33774
727-515-6184
Match Secretary: Theresa Bradley
438 Carriage Road, Satellite Beach, FL 32937

Judge: Mrs. Dawn Massey
931 Burghley Court, Newport News, VA 23608

Entry Fees

- Pre-Entry Fee: \$8 per entry
Day-of-Match Entry Fee: \$10 per entry

Spring has sprung!

Announcing a special litter...

Ch. Happy HR Beauty in the Beast

BISS Ch. Happy HR Highmark Bad News Bears
CD SH WCX SDHF OS - "Coach"

Ch. Highmark Weather or Naught

Litter due mid-April

Ch. Ajan's Loverboy BISS

Unicoi's Sail Away Angel CDX TD JH CCA "Sophie"

Unicoi's Down By The Sea

Both Coach and Sophie are OFA Good hips, OFA elbows and cardiac normal, and CERF clear.

Coach was the #1 show Golden in the country in 2007, a multiple group and specialty winner. Best in Sweeps at the 2003 GRCA National and Best of Winners at the 2004 National. He is also a Senior Hunter, and working on Master Hunter, obedience and agility titles. He is a high drive, intelligent dog, a superb mover, beautiful front and plush friendly expression.

He has sired multiple champions, an OTCH, and several offspring are working on Master Hunter.

Sophie earned her working titles while also showing in the breed ring. She is pointed toward her CH, and currently training for Senior, Utility and TDX. She is a tight package, athletic and beautiful on the move.

This is Sophie's first litter. We expect very sound, typey pups with strong performance potential.

Now taking reservations for show and performance homes.

AD BY  K9-DESIGN.COM



Richwood Goldens

Kristin Ozmun-Sipus
Morrison, FL (Ocala)
352-229-1575
kjsipus@aol.com

2010 SPECIALTY TROPHY DONATIONS

It's time to start thinking about our Specialty in June of this year, and that includes Trophy Donations.

We have four general donation and sponsor levels:

Diamond - Over \$200

Gold - \$100 to \$199

Silver - \$50 to \$99

Bronze - \$25 to \$49

Please send your trophy donations to:

Debbie Finch, 1918 Sir Lancelot Circle, St. Cloud, Florida, 34772

Be sure to indicate (1) which class or classes you want to sponsor, and (2) which day: Thursday or Saturday.



The Officers and Board of Directors of Mid-Florida Golden Retriever Club appreciate the support of the members who are able to contribute to the great trophies we present at our Specialty.



2010 SPECIALTY TROPHY DONATIONS

The Officers and Board of Directors would like to take this opportunity to thank the following members & friends of the Mid-Florida Golden Retriever Club for their generous support.

DIAMOND SPONSOR Over \$200

GOLD SPONSOR \$100-\$199

SILVER SPONSOR \$50.00-\$99.00

Susan Fulenwider HGL Retrievers

BRONZE SPONSOR \$25.00-\$49.00

2010 SPECIALTY TROPHY DONATIONS

MFGRC Specialty Trophies
Thursday, June 24, 2010

Class:	Sponsorship Cost	Donated by:
Best of Breed	\$100.00	
Best of Opposite Sex	\$75.00	
Best of Winners	\$75.00	
Winners' Dog	\$50.00	
Winners' Bitch	\$50.00	
Reserve Winner's Dog	\$35.00	
Reserve Winner's Bitch	\$35.00	
Best Veteran	\$75.00	
Best Opposite Veteran	\$50.00	
Best Junior Show	\$75.00	
1st 6-9 months Dog	\$10.00	
1st 6-9 months Bitch	\$10.00	
1st 9-12 months Dog	\$10.00	
1st 9-12 months Bitch	\$10.00	
1st 12-18 months Dog	\$10.00	
1st 12-18 months Bitch	\$10.00	
1st Novice Dog	\$10.00	
1st Novice Bitch	\$10.00	
1st Bred by Dog	\$10.00	
1st Bred by Bitch	\$10.00	
1st AM Bred Dog	\$10.00	
1st Am Bred Bitch	\$10.00	
1st Open Dog	\$10.00	
1st Open Bitch	\$10.00	
1st Hunting/Retriever Dog	\$10.00	
1st Hunting/Retriever Bitch	\$10.00	
1st Vet. 7-10 years Dog	\$10.00	
1st Vet. 7-10 years Bitch	\$10.00	
1st Vet. 10-12 years Dog	\$10.00	
1st Vet. 10-12 years Bitch	\$10.00	
1st Vet. 12 yrs and up Dog	\$10.00	
1st Vet. 12 yrs and up Bitch	\$10.00	

MFGRC Specialty Trophies

Thursday, June 24, 2010

Class:	Sponsorship Cost	Donated by:
1st Brood	\$10.00	
1st Stud Dog	\$10.00	
1st Novice Junior JH	\$10.00	
1st Novice Senior JH	\$10.00	
1st Open Junior JH	\$10.00	
1st Open Senior JH	\$10.00	
1st Int. Junior JH	\$10.00	
1st Int. Senior JH	\$10.00	
High in Trial (HIT)	\$100.00	
High Combined (HC)	\$100.00	
Obedience:		
1st Novice A	\$10.00	
1st Novice B	\$10.00	
1st Open A	\$10.00	
1st Open B	\$10.00	
1st Utility A	\$10.00	
1st Utility B	\$10.00	
1st Grad. Novice	\$10.00	
1st Grad Open	\$10.00	
1st Versatility	\$10.00	
1st Veterans	\$10.00	
Rally:		
1st Rally Novice A	\$10.00	
1st Rally Novice B	\$10.00	
1st Rally Advanced A	\$10.00	
1st Rally Advanced B	\$10.00	
1st Rally Excellent A	\$10.00	
1st Rally Excellent B	\$10.00	
Sweepstakes:		
BISS	\$35.00	
BOSS	\$35.00	
BVSS	\$35.00	
BOVSS	\$35.00	

2010 SPECIALTY TROPHY DONATIONS

Supported Entry Trophies
Saturday, June 26, 2010

Class:	Sponsorship Cost	Donated by:
Best of Breed	\$75.00	
Best of Opposite Sex	\$50.00	
Best of Winners	\$50.00	
Winners' Dog	\$40.00	
Winners' Bitch	\$40.00	
Reserve Winner's Dog	\$30.00	
Reserve Winner's Bitch	\$30.00	
1st 6-9 months Dog	\$10.00	
1st 6-9 months Bitch	\$10.00	
1st 9-12 months Dog	\$10.00	
1st 9-12 months Bitch	\$10.00	
1st 12-18 months Dog	\$10.00	
1st 12-18 months Bitch	\$10.00	
1st Novice Dog	\$10.00	
1st Novice Bitch	\$10.00	
1st Bred by Dog	\$10.00	
1st Bred by Bitch	\$10.00	
1st AM Bred Dog	\$10.00	
1st Am Bred Bitch	\$10.00	
1st Open Dog	\$10.00	
1st Open Bitch	\$10.00	
BISS	\$50.00	
BOSS	\$30.00	
BVSS	\$50.00	
BOVSS	\$30.00	

Ear Cleaning / Hot Spots / Fungus

Solution

This is the best solution I have used when it comes to gucky ears.

**"Purple Power Ear Solution"
aka "purple power potion!!!"**

16 oz. bottle isopropyl alcohol
4 tablespoons Boric Acid Powder
16 drops Gentian Violet Solution (get this at Wal-Mart pharmacy)

Mix all ingredients in the alcohol bottle & shake. (You may need to pour out a small amount of alcohol to be sure it will all fit). SHAKE WELL before each use to disperse the boric acid. It's easier to get in the dog's ears if you put some in a small squirt bottle.

Treatment: Flood ear with solution & massage gently for 60 seconds and wipe with a tissue or cotton ball. Flood a second time and just wipe without massaging. The dog will shake the excess out. The Gentian Violet isn't supposed to stain, but be careful.

Schedule of treatment:
2 times per day for the first 2 weeks
1 time per day for the next 2 weeks
1 time per month thereafter

All ingredients are available at a pharmacy. The Gentian Violet will be the hardest to find and may need to be special ordered.

Even despite the alcohol, dogs don't object to even the first treatment. The Boric Acid soothes the ear & the Gentian Violet is an anti-infection agent. (Where babies get their purple belly buttons from!!) The solution works well on any ear problem from mites to wax to canker. One vet reported a success rate of 95%-99% and felt those not successful had not been routine about it or had not done the treatment long enough. This solution is also effective for the treatment of fungus type infections on the feet & elsewhere on the dog, for cuts on dogs or people, and for hot spots.

For EXTERNAL use only. Avoid getting in eyes.



Date of Approval: September 25, 2007

FREEDOM OF INFORMATION SUMMARY

ORIGINAL NEW ANIMAL DRUG APPLICATION

NADA 141-277

COMFORTIS

Spinosad
Chewable tablets
Dogs

Kill fleas and are indicated for the prevention and treatment of flea infestations
(*Ctenocephalides felis*) on dogs for one month.

Sponsored by:

Elanco Animal Health
A Division of Eli Lilly & Co.

Study Director: Michael A. Schnell, DVM, MBA, White Eagle Laboratories, Inc., Doylestown, PA

Animals: 3 pregnant female dogs

Dosage Form: Capsule containing spinosad technical powder (experimental formulation)

Route of Administration: Oral

Dosage Groups: There was one treatment group. All three dogs received spinosad.

Study Duration: 59 days

Study Design: Dogs were dosed twice at 90 mg/kg, once at day 28 of gestation and once 1 day prior to imminent parturition.

Parameters Measured: Clinical observations, physical examinations, and body weights for dams and puppies, maternal clinical pathology, milk/colostrum spinosyn concentrations, puppy histopathology and gross pathology

Results: All dams survived the study. No treatment-related effects were noted for clinical observations, physical examinations, body weights, or clinical pathology in the dams. The spinosad milk: reference plasma ratio ranged from 2.2-3.5. Mortality and morbidity varied across the three litters. Of the total 24 puppies born, 10 (41%) completed the study. Four puppies (16.7%) were immediately culled to reduce litter size, according to standard laboratory procedures. Causes of mortality for the other 10 puppies included stillborn (3 puppies) and death or euthanasia due to deteriorating health (7 puppies). Puppy morbidity included lethargy, dehydration, weakness, and thinness. Mortality and morbidity were greatest in puppies from the dam with the highest spinosyns level in milk (calculated dose of 2.2 mg/kg over a 9-day period). This dam also had the largest litter (10 puppies), which likely contributed to puppy mortality.

IV. HUMAN FOOD SAFETY: This drug is intended for use in dogs, which are non-food animals. Because this new animal drug is not intended for use in food producing animals, CVM did not require data pertaining to drug residues in food (i.e., human food safety) for approval of this NADA.



HAPPY ST. PATRICK'S DAY



Well, they say everyone is Irish on St. Patrick's Day!

Happy St. Patrick's Day from

Devlin and Jaymus Adams



Photo Courtesy of Bob and Con-

Another chilly, rainy day . . .



So Bertie Leon decided to reorganize the toy basket!

BRAGS and WAGS

Michele Lemole has some brags to share. First "Davis" Sandpiper's QuickStep won Best In Sweepstakes at the Everglades golden retriever club specialty. Second "Hobie" Sandpiper's Surf's Up BOSS was WD/BOW for a 4pt major the same weekend which makes him a new CHAMPION. Hobie was handled from started to finish to every point by Michele. Hobie is owned by Michele Lemole and co-owned with breeder Patty Pace. Hobie's Championship also makes his mother "Blondie" BISS Ch. Sandpiper's Blondes Have More Fun SDHF an Outstanding Dam. Blondie is owned by Club member's Patty Pace and Natalee Heilmen.



Betty Lambert and Debbie Finch are very pleased to report that their Katie earned RAE legs #5 and #6 at the Strawberry Cluster in Lakeland in February, and also earned second and third place ribbons in the process! And if that wasn't enough, Katie earned RAE legs #7 and #8 at the IRDTC trial on March 13th-14th. In addition to the RAE legs, Katie collected 4 placements, including a first and a second place in the Excellent classes! Go Katie Go!!!

Kay Johnson's Riley, HR Morninglo's New Moon Rising Jh WCX, passed his first Finished test at the Northeast Florida HRC test on Feb. 21st. He hopes to continue towards his title at the Wiregrass HRC test on March 13 and 14 in Albany, GA.

Connie and Bob Adams' young dog, Marathon We Be Jammin at Windsor, CD, CGC, "Jaymus" passed both days at the MFGRC Hunt Test (Junior) and then got a third pass at the Jacksonville Retriever Club hunt test held in Williston, Fl. Connie is also very pleased to report that her boy Mischief's Notorious Windsor, UD, RE, JH, WC, CCA, VC, CGC - "Devlin" is now a full member of the Pet Therapy Team at Monroe Regional Hospital in Ocala, Florida. His golden smile and outstanding personality brings smiles and tears of joy to many patients. It's a very rewarding time for both Connie and Devlin.

Tom Hell is happy to report that his Angel, Shilo's Heavenly Inn Spiration, brought back eight ducks to him to complete the final two legs for her Started Hunting Retriever title at the CFHRC hunt test on March 6th and 7th.

Southern Magik's Sunny Blue Skye won Best in Match at the MFGRC Match that was Ann Rowe's house on March 6th. Way to go Skye!

Anney Doucette is happy to brag that Fisher completed his UKC "HR" (Seasoned) title at CFHRC in March, earning the title with straight passes. The same weekend, three of his babies passed Started both days: Magic, Katie & Pockets, all bred by Glenda Manucy. Pockets also has his first AKC point, earned the weekend before with a BOB from the classes! Pocket's brother Flip is running in the Exc. level in agility, racking up MACH points and double-Qs. Go Fish-puppies!

GOLDEN TALES

c/o Leah Wright, Editor
459 Weathersfield Avenue
Altamonte Springs, FL 32714



Next General Meeting

April 10, 2010

Astatula Fun Day and General Meeting

See you there!